

- 3-5. Distorsion charac. : $< 0.007\%$
(at 20Hz ~ 15KHz, 1.5Vrms INPUT)
- 3-6. Termination Impedance
 Source (Rg) : < 50 ohms
 Load (Rl) : > 10 Kohms
- 3-7. Current Consumption : < 25 mA
- 3-8. Operating Supply Voltage : ± 12 V
- 3-9. Operating Temperature Range : $0^{\circ}\text{C} \sim +60^{\circ}\text{C}$

4. Test Circuit

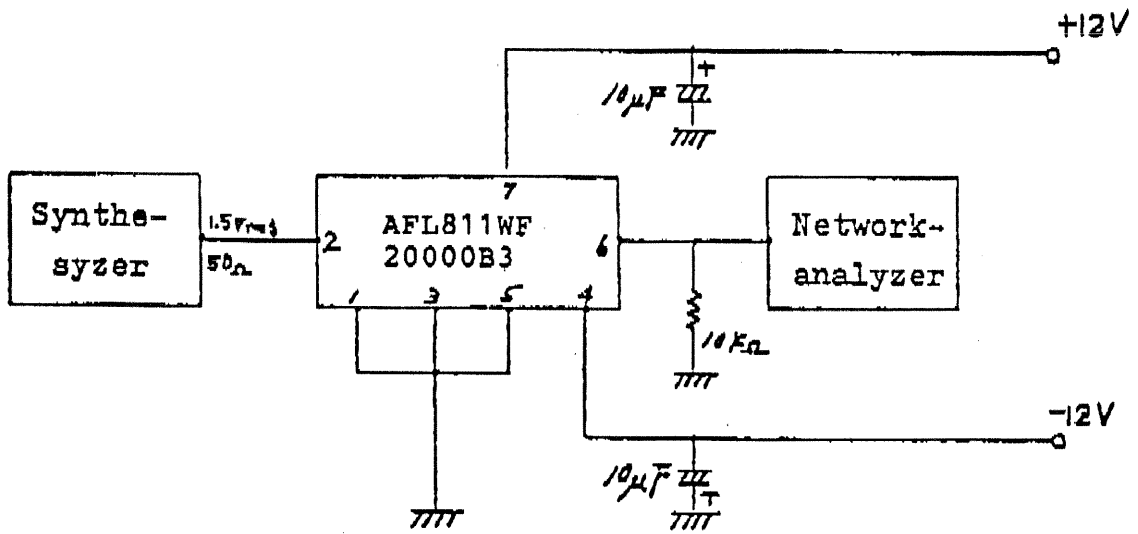
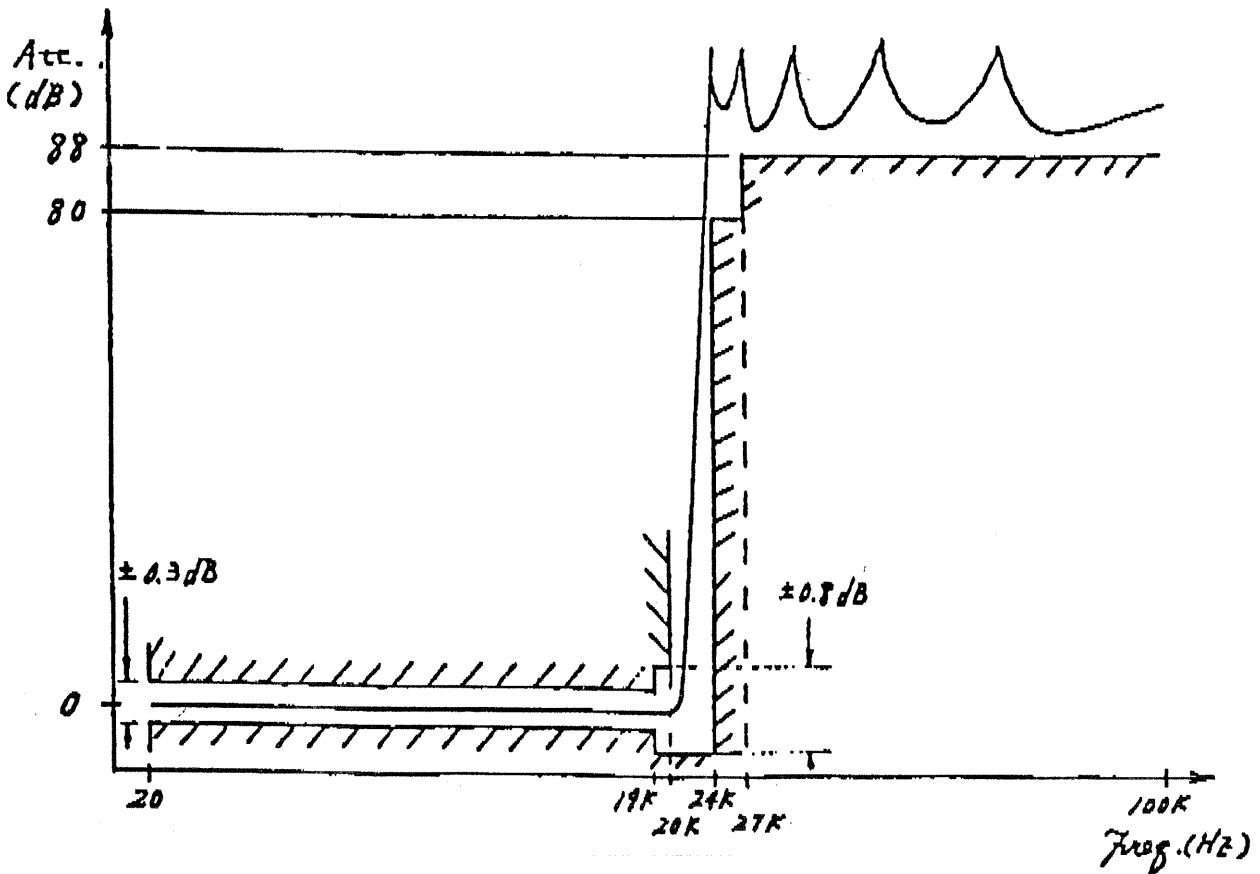


Fig.1

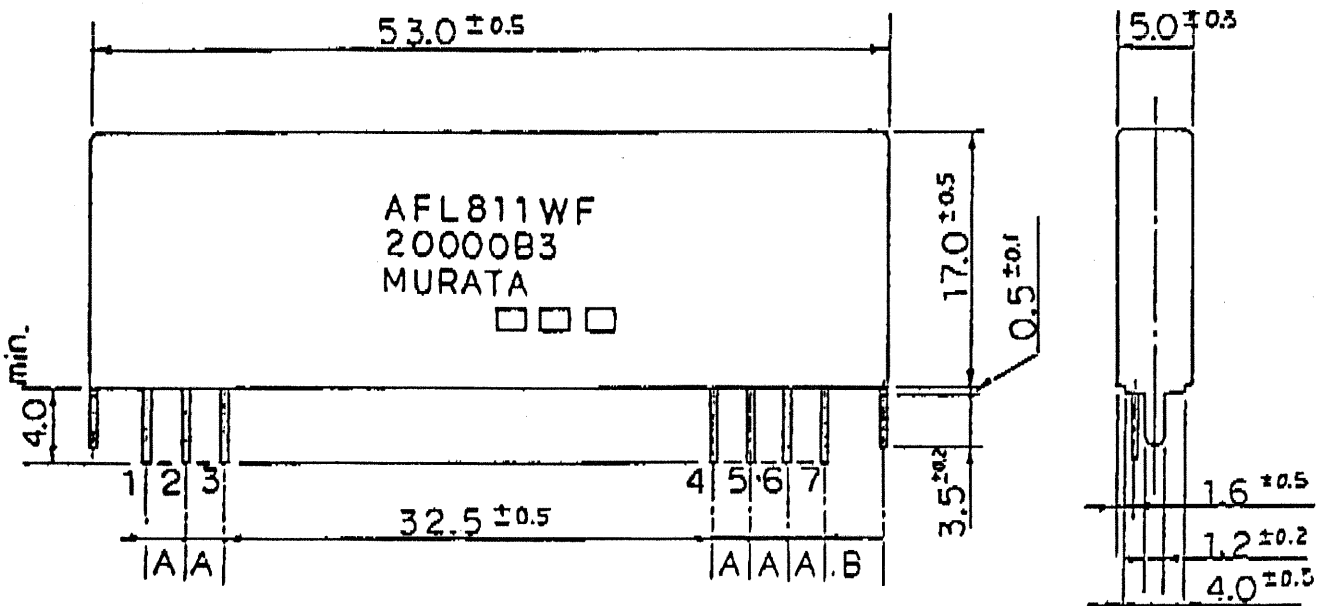


ACTIVE FILTER

———— Lowpass Filter ————

1. MODEL NO. AFL811WF20000B3

2. Dimensions & connections



A=2.5±0.3

B=4.0±0.8

- | | |
|---------------|---------------|
| 1. Ground | 5. Ground |
| 2. Input | 6. Output |
| 3. Ground | 7. +Vcc(+12V) |
| 4. -Vee(-12V) | |

3. Electrical Characteristics

- | | | |
|--------------------------------|---|----------------|
| 3-1. Transfer function | : | Lowpass Filter |
| 3-2. Cutoff Frequency(f_c) | : | 20000Hz |
| 3-3. Passband Gain at 1000Hz | : | -6dB ± 1.0dB |
| 3-4. Passband charac. | : | Fig.1 |
| Ripple & Att. | | |